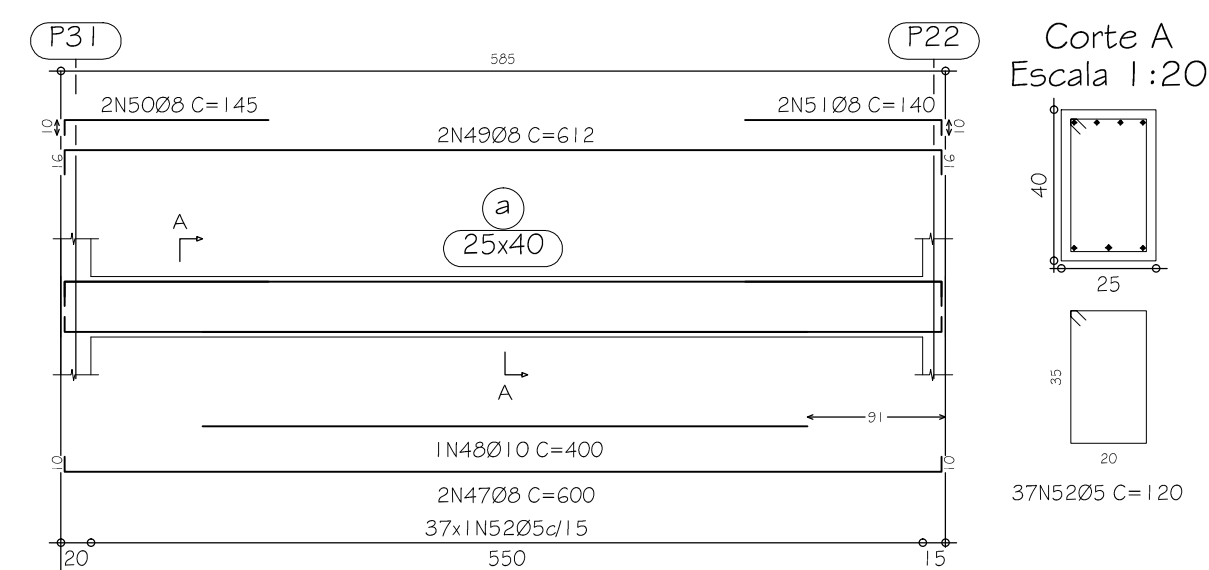
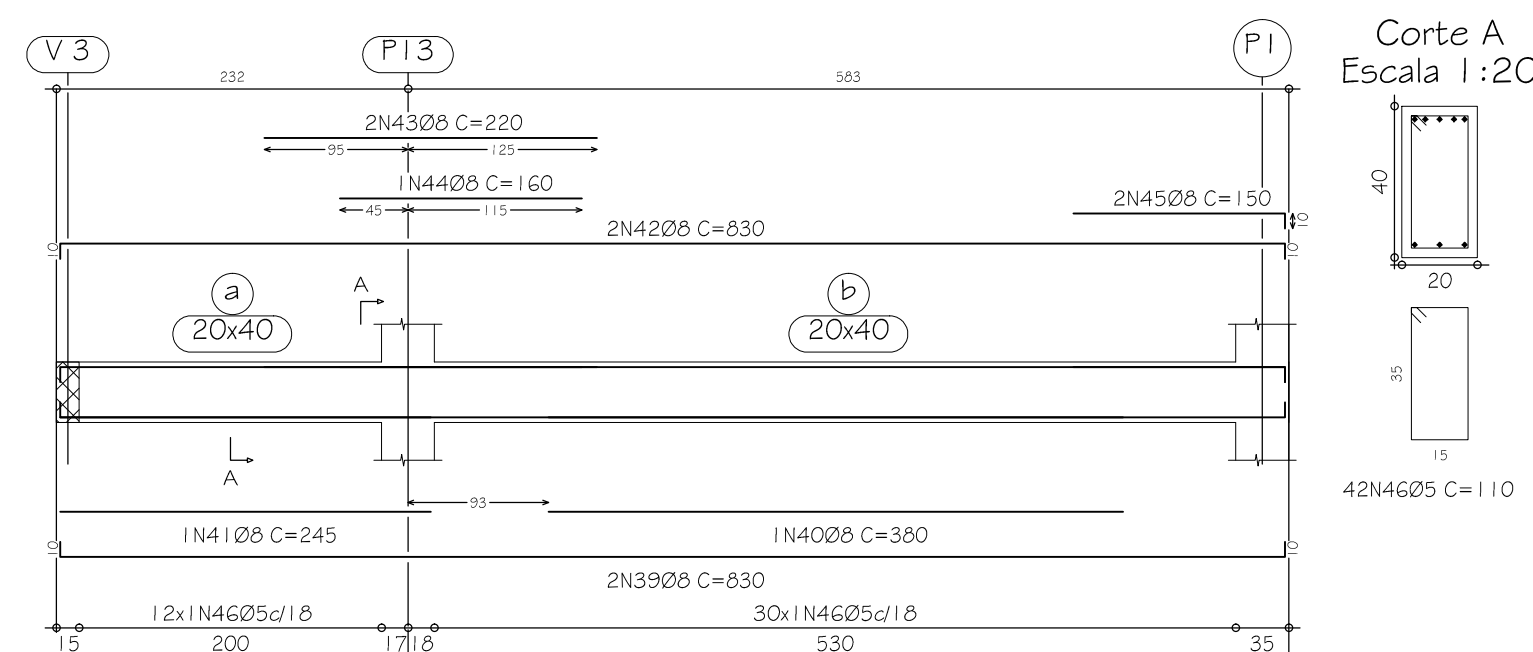


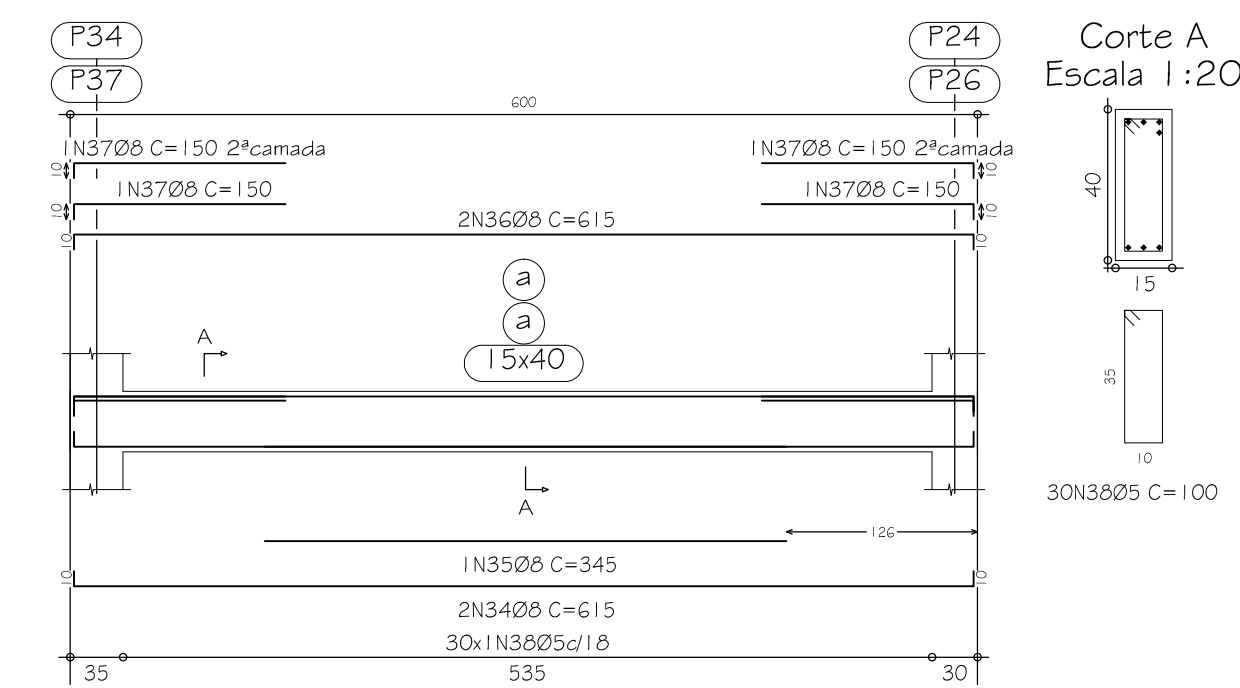
V 7
Escala 1:50



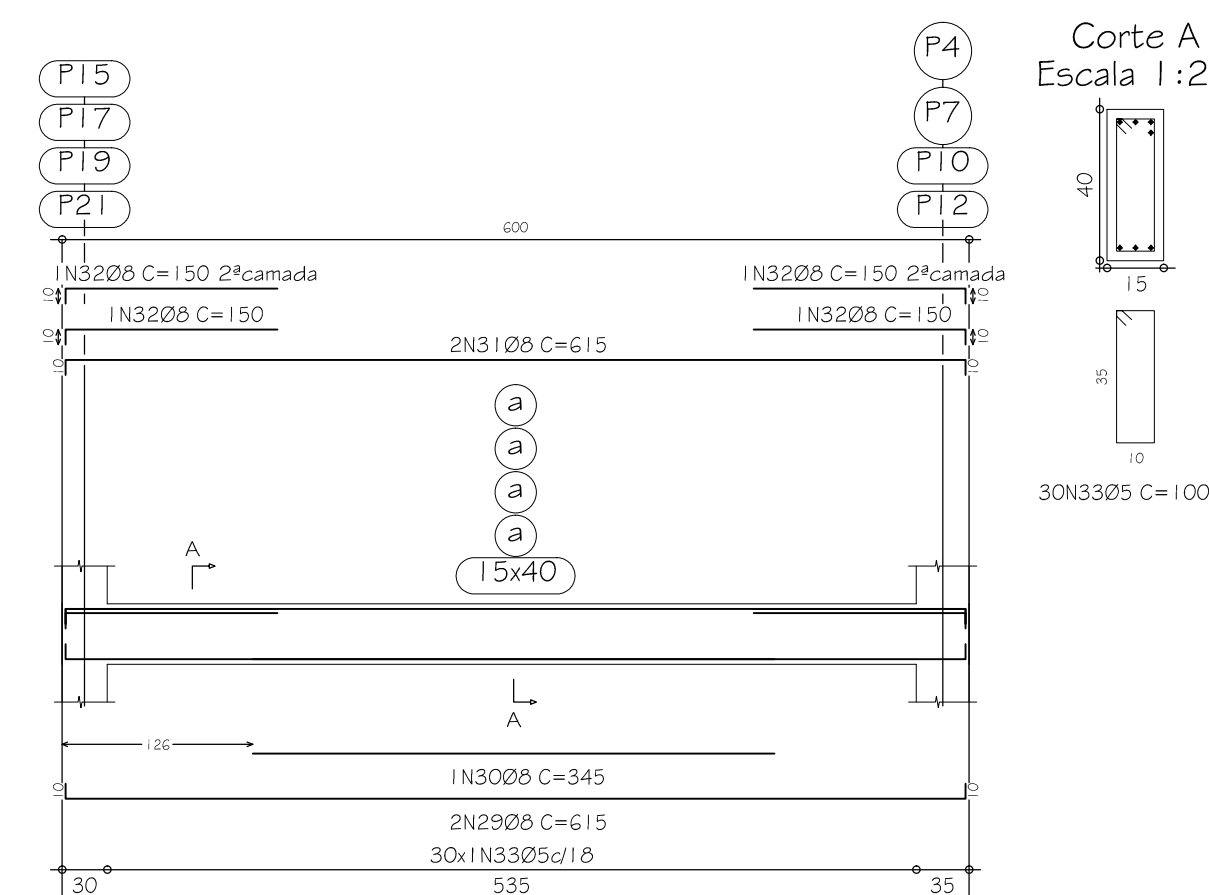
V 8
Escala 1:50



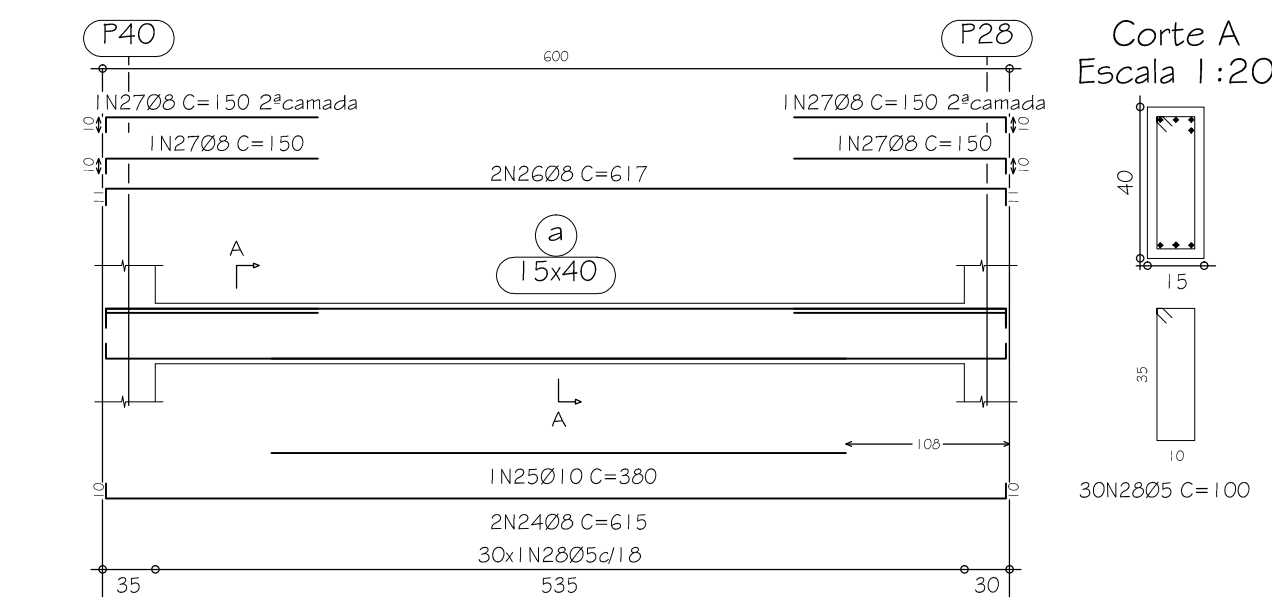
V 9
V 11
Escala 1:50



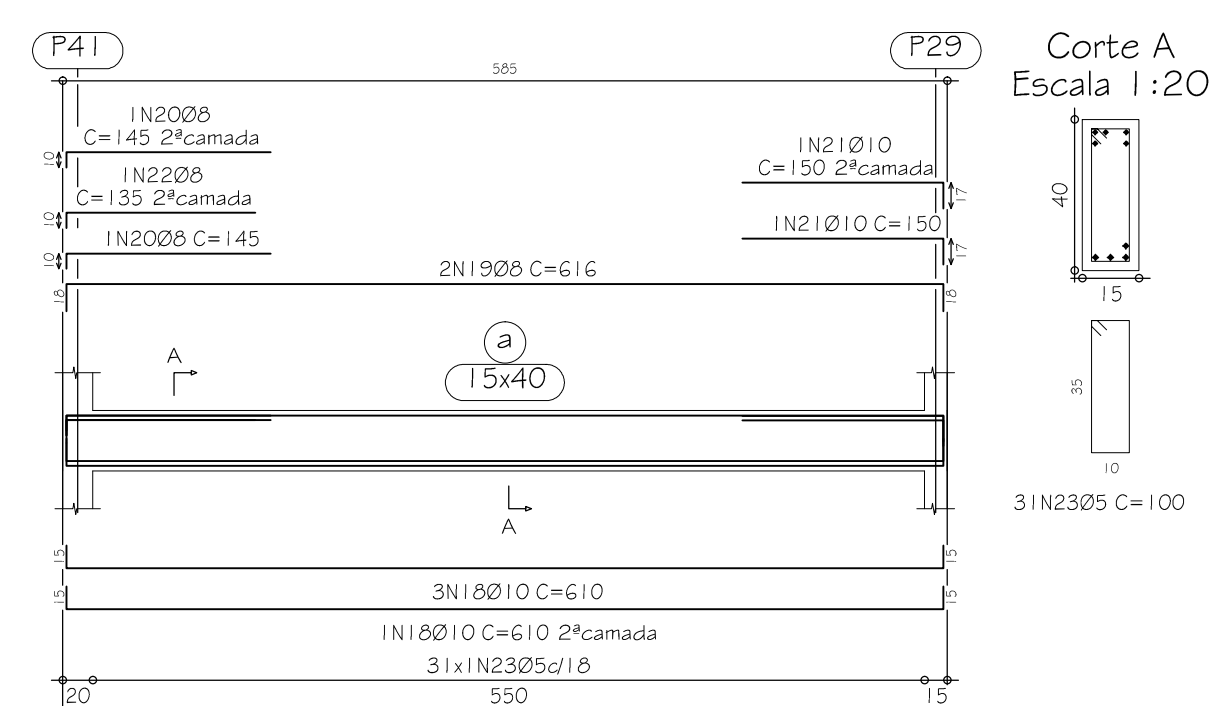
V 10
V 12
V 16
V 17
Escala 1:50



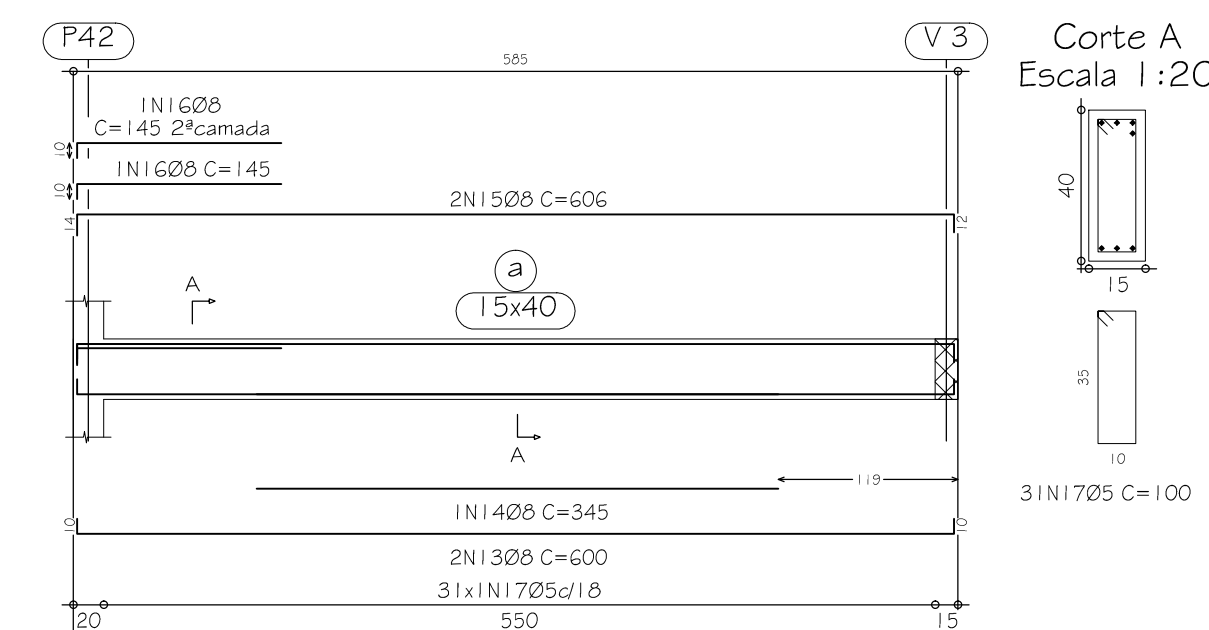
V 13
Escala 1:50



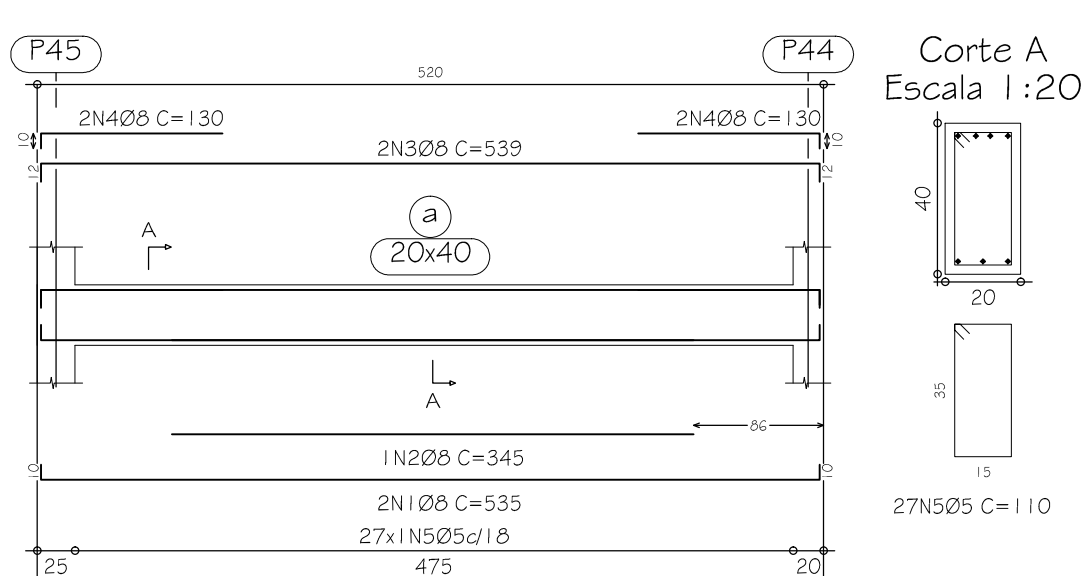
V 14
Escala 1:50



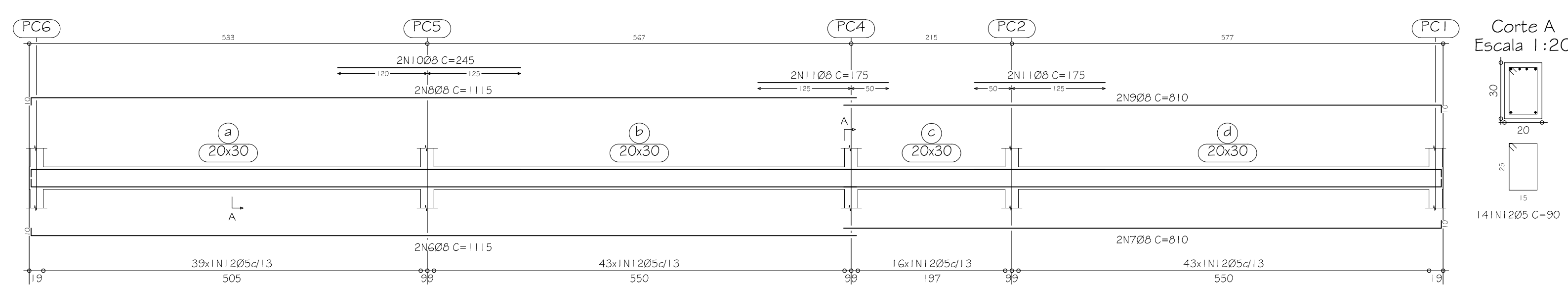
V 15
Escala 1:50



V 18
Escala 1:50





V 19
Escala 1:50



Elemento	Pos.	Diam.	Q.	Comp. (cm)	Total (cm)	CA-50-A (kg)	CA-60-B (kg)
V 18	1	Ø8	2	535	1070	4.2	
	2	Ø8	1	345	345	1.4	
	3	Ø8	2	539	1078	4.2	
	4	Ø8	4	130	520	2.0	
	5	Ø5	27	110	2970		4.7
Total+10%:						13.0	5.2
V 19	6	Ø8	2	1115	2230	8.6	
	7	Ø8	2	810	1620	6.4	
	8	Ø8	2	1115	2230	8.6	
	9	Ø8	2	810	1620	6.4	
	10	Ø8	2	245	490	1.9	
V 15	11	Ø8	4	175	700	2.7	
	12	Ø5	141	90	12690		19.9
Total+10%:						38.5	21.9
V 14	13	Ø8	2	600	1200	4.7	
	14	Ø8	1	345	345	1.4	
	15	Ø8	2	606	1212	4.8	
	16	Ø8	2	145	290	1.1	
	17	Ø5	31	100	3100		4.9
Total+10%:						13.2	5.4
V 13	18	Ø10	4	610	2440	15.3	
	19	Ø8	2	616	1232	4.8	
	20	Ø8	2	145	290	1.1	
	21	Ø10	2	150	300	1.9	
	22	Ø8	1	135	135	0.5	
Total+10%:						26.0	5.4
V 10-V 12-V 16 V 17	23	Ø5	31	100	3100		4.9
	24	Ø8	2	615	1230	4.8	
	25	Ø10	1	360	360	2.4	
	26	Ø8	2	617	1234	4.8	
	27	Ø8	4	150	600	2.4	
Total+10%:						15.6	5.2
V 9-V 11	28	Ø8	2	615	1230	4.8	
	29	Ø8	1	345	345	1.4	
	30	Ø8	2	615	1230	4.8	
	31	Ø8	4	150	600	2.4	
	32	Ø8	30	100	3000		4.7
Total+10%:						14.7	5.2
V 8	33	Ø5	30	100	3000		20.6
	34	Ø8	2	615	1230	4.8	
	35	Ø8	1	345	345	1.4	
	36	Ø8	2	615	1230	4.8	
	37	Ø8	4	150	600	2.4	
Total+10%:						14.7	5.2
V 7	38	Ø5	30	100	3000		10.4
	39	Ø8	2	830	1660	6.5	
	40	Ø8	1	360	360	1.5	
	41	Ø8	1	245	245	1.0	
	42	Ø8	2	830	1660	6.5	
V 6	43	Ø8	2	220	440	1.7	
	44	Ø8	1	160	160	0.6	
	45	Ø8	2	150	300	1.2	
	46	Ø5	42	110	4620		7.3
Total+10%:						20.9	6.0
V 5	47	Ø8	2	600	1200	4.7	
	48	Ø10	1	400	400	2.5	
	49	Ø8	2	612	1224	4.8	
	50	Ø8	2	145	290	1.1	
	51	Ø8	2	140	280	1.1	
Total+10%:						15.6	7.7
V 4	52	Ø5	37	120	4440		7.0
	53	Ø8	2	145	290	1.1	
	54	Ø8	2	145	290	1.1	
	55	Ø8	2	145	290	1.1	
Total+10%:						15.6	7.7
Ø5:						0.0	90.0
Ø6:						207.0	0.0
Ø10:						24.2	0.0
Total:						231.2	90.0

Detalhamento Vigas Baldrame

Escala 1:50

REVISÃO:	03		
REVISÃO:	02		
REVISÃO:	01		
EMIÇÃO INICIAL:	* 21/05/2013	PRIMEIRA ENTREGA PARA A CONTRATANTE	
		PREFEITURA MUNICIPAL DE JOINVILLE END.: Av. Herman August Lepper, nº10, Centro TEL.: (47)3431-3233 - Joinville - Santa Catarina CNPJ: 83.169.623/0001-10	
E.M. ORESTES GUIMARÃES		COORDENAÇÃO DE PROJETOS:  SOLAR CONSTRUÇÕES, PROJETOS E CONSULTORIA LTDA. CNPJ: 13.411.864/0001-48 TEL.: (31)3566-2814 - BH/MG eken@solarengenharia.eng.br	
PREFEITURA MUNICIPAL DE JOINVILLE CNPJ: 83.169.623/0001-10 CONTRATANTE		Eng. Eduardo Ken Mizuta CREA-SC 139067/D RESPONSÁVEL TÉCNICO	
ENDEREÇO: RUA BOEHMERWALD, 1.830 - ITINGA - JOINVILLE-SC		ARQUIVO: 001-009-2013-EXE-EST-07	
DETALHES: Detalhamento de Vigas Baldrame V7 a V17		PROJETO: PROJETO ESTRUTURAL	DATA: SET/2013
		DESENHISTA: ISABELLA TEOTONIO	FOLHA: 07/09
		ESCALA: INDICADA	